

## How to use **EASYJoint**

### INSTRUCTIONS and PRECAUTIONS FOR **PEDESTRIAN** PAVING AREAS

Before using **EASYJoint**, read **all** of these instructions, watch the video and visit [www.azpects.co.uk](http://www.azpects.co.uk)

#### OVERVIEW - BEFORE YOU START

**EASYJoint** is designed for use on a free draining site. Before using check the site conditions are suitable for the use of **EASYJoint**, which is a permeable jointing solution (see below).

#### Site Conditions

**IMPORTANT** The project's ground conditions must be free draining. If the area stays naturally wet and rarely dries out, or if there is a high water table, then **EASYJoint** **should not be used**.

**EASYJoint** cures gradually on contact with air so if the paving base never or rarely dries, nor will the bottom of the joints, resulting in joint failure. If the joints cannot gain full exposure to air, sometimes the top will crust over (from evaporation) but the lower section of the joint may not cure properly.

Additionally, ensure the project has a suitable "fall" to allow surface water to drain away.

#### Base Mix

For a project to be free draining, both the bedding and sub-base must be permeable. To achieve this, assuming a permeable sub-base, where a mortar bedding is used it should be no stronger than 6 parts sand to 1 part cement (6:1). This will ensure good drainage and is perfectly adequate for pedestrian areas. If water is retained in the joint for long periods, rather than passing through, the joint may fail.

#### Weather Conditions

When working on a free draining, permeable project, **EASYJoint** can be applied in virtually all weather conditions. However in freezing conditions, or in falling temperatures below 3°C, refer to the website for guidance. If heavy or prolonged rain is forecast, ideally wait for drier conditions as heavy rain could disturb sand particles that make up **EASYJoint** before it cures hard, giving an uneven texture.

Prolonged rain will also extend the curing process. See [www.azpects.co.uk](http://www.azpects.co.uk) for more information.

#### Suitable Paving Types

**EASYJoint** can be used with all paving types, but some need additional attention before and during the use of **EASYJoint**. In particular, please be aware of the information supplied elsewhere in this guide about sensitive natural stone types and paving with chamfered edges ("V" shaped joints).

#### **EASYJoint** Colours

There are five colours to choose from. However, the sand element of **EASYJoint** is a natural product mined from quarries and shades can vary. Always select tubs from the same pallet to complete a project. It is also worth checking the batch numbers on the side of the tub. If extending a previously jointed project, be aware that variances in colour are likely. The colours depicted on the tub and illustrated on the website are representative only.

#### Repointing Old Paving

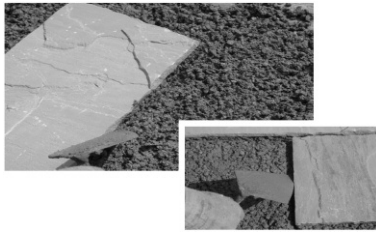
Clean out the old jointing product completely to create the correct joint size (see information under the 'Joints' section). Do not use **EASYJoint** if the correct and fully clean joint size cannot be obtained.

Be aware of the information supplied about site conditions and the permeability of the base and ground conditions. If there is uncertainty about either of these factors, do not use **EASYJoint**.



## JOINTS

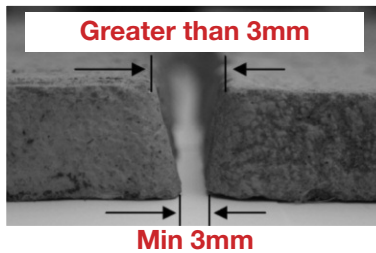
### Joint Dimensions



	For paving laid on a solid but permeable foundation	For paving laid on a compacted sand or crusted aggregate foundation
Joint width (min.)	3 mm	3 mm
Joint depth (min.)	25 mm	30 mm

**Ensure the minimum 3mm gap width is maintained throughout the full depth of the paving material.**

With thin paving it is difficult to achieve 25mm depth. To achieve it, create a channel in the base material by running the tip of a trowel around the exposed edges of each paver to create 25mm depth for **EASYJoint** to sit in (see illustration above).



### CHAMFERED PAVING (Paving with 'V' Joints)

Some concrete paving is made in moulds and has chamfered edges creating a 'V' shaped joint between two paving slabs, wider at the top than at the bottom. This gap shape can be the most challenging to work with and we recommend you carefully follow the instructions below.

**1. Maintain the Width of Joint Throughout** Maintain at least a 3mm gap width throughout the depth of the paving material. Never have this type of paving butted together. See photograph.

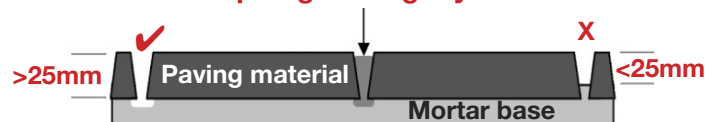
**2. Lock in the Joint** An irregular "V" shaped joint means that **any type of filler** will have difficulty staying in place. To assist in forming a stable joint when laying the paving, draw the tip of your trowel along the bottom edge of each slab so that a small gap forms along and under the paving edge. **EASYJoint** will flow into the gap and when set will be locked into place. See diagram below.

3. To further aid this, "point" or "strike" the joint; **do not leave it textured**. This ensures the top of the filler is below the top rounded edge of the paving and helps it adhere to the base and sides of the paving material.

**4. Do not overfill the Joint** As with all types of paving, never overfill the joint. This is particularly important if the paving has a "rounded" top edge. The filler should be kept below the start of the "rounding". See diagram below.



**Fill the **EASYJoint** to just below the surface of the paving, particularly if the top edge is slightly rounded**



**Create a small gap under the edge of each slab in order to "lock" the **EASYJoint** under the paver**



### APPLICATION PROCESS

Visit [www.azpects.co.uk](http://www.azpects.co.uk) prior to working with the product to watch the video demonstration and to review the comprehensive information provided in the **EASYJoint** section. Also read the **General Information and Precautions** section of this leaflet.

**Ensure the site conditions, project base and bedding are suitable (as previously described).**

If the site conditions, materials or paving base do not meet the requirements, refer to [www.azpects.co.uk](http://www.azpects.co.uk) for additional guidance.

### The Process

**1. Wet the Paving.** Absolutely soak the area to be jointed with water using a hose. The paving must be saturated before starting and remain soaked throughout the application process - in fact, the wetter the better. Do not shortcut this process, particularly if working with absorbent or sensitive materials such as Fossil Mint Sandstone, Modak, Granite and many Limestone types. Particularly sensitive stone will need sealing, preferably before laying, on its surface and edges.







**2. Work Quickly.** It's preferable for two operators to work together; one sweeping, the other using the hose. Using small quantities of **EASYJoint**, simultaneously spread and wash the compound across the surface using a light jet of water and a broom/squeegee, allowing it to fall into the joints. Never allow **EASYJoint** to stand in piles or allow the paving to dry with any remaining on its surface.

**3. Continuously Wash the Paving.** The hose operator should alternate between following the sweeper to aid washing the compound into the joints and moving ahead of him/her so that the paving is always wet. This is particularly important in warm/hot weather conditions.

**4. Top Up.** Use more **EASYJoint** to top up any low areas, repeating the washing process as described previously.

**5. Final Wash and Clean.** Apply a final gentle spray of water across the surface to wash off any **EASYJoint** residue and to aid the final compaction process. Work conscientiously not to leave any grains of sand on the surface or the rainbow effect caused by the linseed oil. When the water has drained away, a "flicking" motion with a clean soft hand brush (not the same one used to apply the compound) will aid the removal of any loose grains.



**6. Smooth the Joints.** Whilst not essential, it is strongly recommended to "point" or "strike" the surface of the joints with a suitable finishing tool. This will assist in checking for low spots whilst ensuring the joints are uniformly below the surface of the paving. It will also aid in keeping the joint cleaner for longer. Start once the paving has dried and the joints are drained, applying virtually no pressure to the tool - it is only to finish the joint, not compress it.

### Working with Porcelain Paving

The same rules apply when working with porcelain paving tiles as with working with stone or concrete. The base on which the porcelain is laid **MUST BE PERMEABLE**. In terms of application, there is not so much need to use copious quantities of water with porcelain as the **EASYJoint** will not cause it to mark in the same way it can with stone or concrete. However, users will find that a small amount of water to form it into a slurry, will make it easier for the operator to fill the joints properly.



### A LITTLE MORE ADVICE

#### Tips

Work cleanly, clearing both the sand grains and the binding oil from the surface as you go. Keep washing until the "rainbow effect" oily water is no longer evident.

Once **EASYJoint** has set hard in the joints, sweep the paving with a stiff broom, diagonally to the joints, to remove any final traces of compound, especially along the edges of "struck" joints. Do not use the same broom that was used in the application process.

Unused but opened **EASYJoint** can be saved for later use by pouring it back into the tub (not in the bag) and covering it with at least 50mm of water. The product should remain usable for a few months.

#### Setting Times

In dry conditions and warm to moderate temperatures and humidity, **EASYJoint** should be firm enough to walk on within 24 hours and will cure very hard within a few days. Cold and wet conditions increase the setting time considerably. Freezing weather will cause the process to virtually cease and it can take many days for the joints to set hard. However **EASYJoint** will eventually set and the weather conditions will not have impaired its integrity in any way.

Similarly, whilst **EASYJoint** remains wet, either via the application process or through rainfall, the curing process will be suspended. Prolonged periods of rain, or several intermittent showers will considerably extend the setting times. Again, this will not affect the final integrity of the product in any way provided water can drain easily away and so allow even curing throughout the joints (as previously explained).





## DOMESTIC VEHICULAR DRIVEWAYS

**EASYJoint** can be used on domestic driveways (vehicle weight of less than 3 tonnes). However, certain provisions when using **must be observed**.

1. Most vehicular drives are constructed with a strong foundation and bedding mix. The consequence is that it will be less, if not completely, impermeable. When using **EASYJoint**, the base and bedding, as always and continuously referred to in this instruction guide and elsewhere, **must be permeable**. If this is not the case then **do not use EASYJoint**.
2. **EASYJoint** has good compressive strength and can easily withstand the downward pressures exerted by a domestic car **provided the surface material is well bedded into the base material**. 50% of the depth of the surface material must be bedded into the base.
3. **EASYJoint** does not form a structural part of the driveway; it only serves as a joint filler. If the surface material is not adequately bedded into the base then the joint filler will not withstand the twisting (or torque) caused when a vehicle changes direction (i.e. turning).



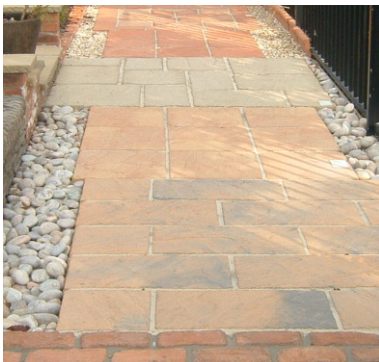
## GENERAL INFORMATION AND PRECAUTIONS

**If you are reading this AFTER you have used EASYJoint, it is too late!**

1. **Site Conditions.** The site conditions must be appropriate for use. Refer to page 1.
2. **Use plenty of water.** It cannot be overly stressed to use plenty of water before, during and after the application of **EASYJoint**.
3. **Sensitive Paving Materials.** Some types of natural stone, for example, Granite, Black Limestone and Modak, can be very sensitive and susceptible to marking from the natural environment, from mortar used for the base or joints and from specialist joint fillers. If unsure, refer to the stone supplier for advice on the sensitivity of the particular stone, for even using liberal amounts of water as demanded elsewhere in these instructions may not be enough to prevent marking. To greatly diminish the possibility of marking these types of stone it is strongly recommended to seal the paving with a breathable sealant, preferably before installation but certainly prior to jointing. A breathable sealer will provide protection both during the jointing process and afterwards. It will also allow any efflorescence (white deposits caused by natural salts) present in the base and substrate to pass through the paving material and over time, dissipate into the atmosphere. This is a problem that is particularly prevalent in Black Limestone and Granite and will regularly appear after installation. **It is not caused by the use of EASYJoint**. More information on these issues can be found on the website. Water-based breathable sealants can be found in the **EASYSeal** Range on the website; they are ideal for this purpose.



4. **EASYJoint is permeable.** This is a positive environmental attribute but over time there may be changes in the appearance of the joint. Dirty surface water passing through the joint can result in discolouration. This is entirely natural; it is not a fault and it will not impair the integrity of the product. The porous nature of the joint also allows algae and fungal growth to develop. Both of these issues can be remedied with the cautious use of a light pressure washer once a year, using a "fan" type nozzle no closer than 150mm (6 inches) from the surface. This will safely clean the joints of dirt and spore growth. More persistent algae/fungal growth can be tackled with an appropriate product from the **EASYCare** range. Do not use a pressure washer on the paving for at least 4 weeks after **EASYJoint's** application.



5. **Strength.** The compressive strength of **EASYJoint** is such that it will adequately take the downward forces exerted by pedestrians and domestic cars, but is not designed to form a structural part of the path/driveway.

6. **Sealing.** **EASYJoint** can be sealed but it is recommended not to apply any type of sealer over the joint for at least a month after it has set hard. Depending on the type of sealant used, **EASYJoint** may or may not remain permeable.

7. **Applying EASYJoint without water.** Installers are strongly advised to apply **EASYJoint** using the standard method as described in these instructions wherever possible. However, there are circumstances where this method may not be suitable, such as when using the compound in freezing conditions, or in temperatures of 3°C and falling. Refer to [www.azpects.co.uk](http://www.azpects.co.uk) for more guidance.

8. **Footwear Caution.** The soles of footwear may pick up some **EASYJoint** during application. Clean them before walking across dried (or drying) paving to avoid leaving "footmarks". For similar reasons, do not use the same broom that was used to apply the **EASYJoint** to clear the surface afterwards; it will be contaminated and may leave marks.







## THE LEGAL STUFF

### Disclaimers

**1. User's responsibility.** The company cannot be aware of all the applications and materials the product may be used with. It is the user's responsibility to determine suitability for use. If used in accordance with the instructions, the product should set hard and not affect the aesthetic properties of the material on which it is used, but no guarantee of this is given or implied. Neither the manufacturer nor supplier accepts any liability for; (a) the joint failing as a result of inherent site conditions, (b) any changes in the appearance of the paving resulting from the use of **EASYJoint** or (c) any visual or physical changes to the joint, whether naturally occurring or from the application of any other substance, i.e. cleaning products or protection coats. If in any doubt test a sample before use. Refer to the website for more precautionary advice.

**2. Colour.** **EASYJoint** is a natural product and shades can vary. The colour depicted on the tub is representative only. Always buy the **EASYJoint** from the same supplier and pallet; this should ensure no variation of shades between the tubs. The colour will also change with natural weathering - becoming dirty.

**3. Marking on Paving.** If incorrectly used with insufficient water to create a barrier between the paving and the **EASYJoint**, or with particularly sensitive stone if it has not been protected with an appropriate sealer before jointing, marking and discolouration may appear - in the form of blotches or freckle-like spots. This is entirely preventable by using the correct installation methods as described in these instructions and elsewhere in Azpects literature and on the website.

However, should this unfortunate circumstance arise, the user may take comfort in the fact that over time (an unknown quantity because of the wide variance in the paving material, level of marking, ongoing weather conditions etc.) such marking should fade and disappear.

**4. Final Warning about the Base and Site Conditions.** **EASYJoint** must be used on a permeable base.

If a strong and consequently impermeable base (such as concrete) and/or a strongly mixed bedding (5 parts or less sand to 1 part cement) then over time the **EASYJoint** is likely to fail. No responsibility is taken by the manufacturer or supplier for such an occurrence.



### Health & Safety

No significant hazard.

Avoid contact with skin and eyes. In case of contact with eyes, rinse immediately with plenty of water and seek medical advice.

May cause irritation to sensitive skin. After contact with skin, wash immediately with plenty of soap and water.

Wear suitable protective clothing and gloves.



### Animals and Aquatic Life

Pets and small animals should be kept away from the site during and immediately after the application (whilst the **EASYJoint** is still very soft and wet residue is on the surface).

Take care when using around ponds - **EASYJoint** can be harmful to aquatic and pond life. Take steps to ensure the product does not get swept into or fall into any pond containing fish or pond life.



[www.azpects.co.uk](http://www.azpects.co.uk)

**Azpects**

Hard landscaping made **EASY**